

Pupae Busting 2008-2009 ↓

As everyone who grows Bollgard II knows, pupae busting is a contractual requirement to grow bollgard II cotton. It is also essential in maintaining the resistance management program set out by the industry. Pupae busting is primarily designed to safe guard the longevity of the product by minimizing the chance of carrying over potentially resistant heliothis.

The 2008-09 cotton season, as with every season, has seen another subtle change in the contract signed off by growers who have taken on Bollgard II cotton. This change requires all growers who are intending to plant winter crops into Bollgard II fields, to have a technology service provider (or T.S.P), to view and sign off on the pupae busting effort as it is taking place, prior to sowing the winter crop. This has been implemented by Monsanto to improve the standards on pupae busting and remove any doubt about what has happened to fields that have been put back down to a winter crop.

Under the late crop removal scheme, crops written off or abandoned prior to February 28th do not need pupae busting. However, crops abandoned or deemed as failed after the 28th February do need to be pupae busted in accordance to the contractual agreement. As far as unsprayed refuge's are concerned, there is no requirement for pupae busting there at all. For further information on your cotton requirements, contact John Nott, Pursehouse Rural Gunnedah, on 0428 668 346.

Position of Heliothis Pupa in the Soil

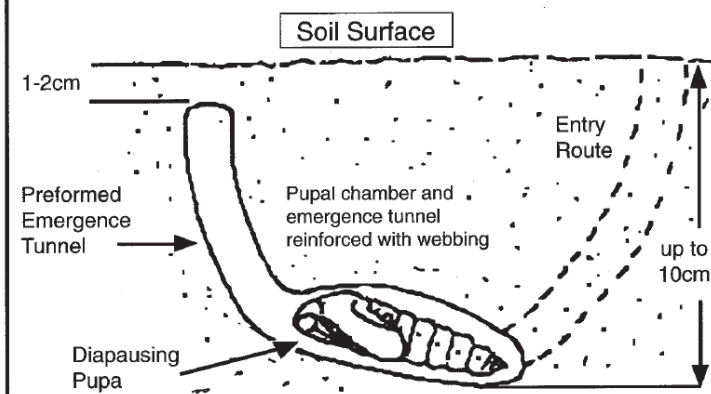


Figure 1 Generalised location of pupae below soil surface note pre formed emergence tunnel for moths

Importance of Seed Quality →



Poor seed quality—seen at emergence and full growth

Many growers are looking to source seed for the upcoming winter crop. It is important to make sure that the seed you are planting is high quality, with zero contamination of undesirable pests, diseases or weeds.

Wet weather at harvest may effect germination and vigour. The seed often looks normal and may germinate soon after harvest. The quality of seed breaks down in storage and often has low vigour at the time of sowing. Therefore it is important to get a germination and vigour test a few months after harvest.

If buying seed from a neighbour or from another area growers should ask for a purity test to make sure there are no insects or weed seeds of importance. Many crop diseases can be transported on seed so it is important to select seed from a disease free paddock and to use a fungicide seed treatment.

Certain varieties are protected by plant breeders' rights (PBR). This means that growers are allowed to grow and keep their own seed for sowing in the future; they are not permitted to sell or trade seed with the intention of sowing. It is important to check if a variety is protected by PBR's before you buy it from another farmer, as the fines are very high (\$55000 for individuals and \$275000 for corporations).

For more information on seed quality, or to organise testing please contact your local Pursehouse Rural agronomist.

Sorghum Midge

Sorghum Midge is a common pest of grain sorghum and can severely reduce yields, especially in late sown crops. The adult sorghum midge is 1 - 1.5 mm in length (about one quarter the size of a mosquito). Its abdomen is orange-red in colour and its single pair of wings is transparent. The female midge lays up to 50 eggs in sorghum flower heads just prior to and during flowering, when yellow anthers are exposed. Female midge numbers are highest between 8 - 11am. The susceptible period may only last 5 - 7 days per head, but where crop flowering is uneven, this danger period may extend to several weeks. When midge populations are high, losses can approach 100% if control measures have not been taken.

Preventative methods such as applying insecticides and selecting varieties with high midge resistance ratings are essential in reducing damage caused by sorghum midge.

Midge ratings are based on the plants level of resistance which is essentially a barrier method of resistance, by the plant, which makes it difficult for the female midge to lay eggs.

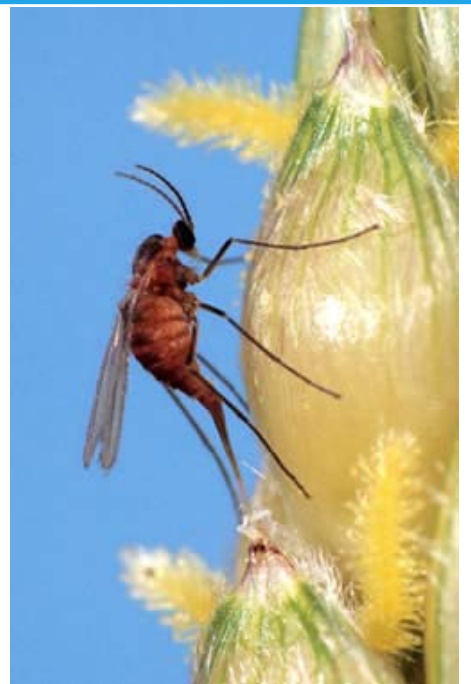
Application of a synthetic pyrethroid is common practice for sorghum midge control. Midge are highly mobile and as such, re-infestation of crops is common so several applications over the danger period may be necessary.

Midge thresholds can be calculated by using the following formula:
 NM/R is greater than $C \times W \times CB / 1.4 \times V \times RD$

Where:

- NM = number of midge/m row
- R = midge rating of hybrid used
- C = cost of control (\$/ha)
- W = row space width (cm)
- CB = cost benefit ratio
- 1.4 = constant
- V = value of crop (\$/t)
- RD = residual life of chemical

Avoid sorghum midge by planting during the preferred planting window where possible. Plant the slowest maturing variety first and ensure an even establishment. Reduce the risk of damage from sorghum midge by planting a hybrid variety with a high midge resistance rating.



Quality pays

Chickpeas	Beans, Lupins, Lentils	In Development
Flipper[♠] <ul style="list-style-type: none"> ■ Tall Desi type with good lodging resistance 	Nura[♠] <ul style="list-style-type: none"> ■ Good disease resistance, reduced lodging Faba Bean 	PBA Chickpeas <ul style="list-style-type: none"> ■ CICA desi chickpeas for 2010 512 for North and Central NSW 503 for Southern regions
Yorker[♠] <ul style="list-style-type: none"> ■ Desi type with best available Phytophthora resistance 	Jindalee[♠] <ul style="list-style-type: none"> ■ Tall pod height Narrow Leaf Lupin 	PBA Field peas <ul style="list-style-type: none"> ■ OZP Field peas for 2011 Early maturing Kaspa types Bacterial blight resistant Dun type
Almaz[♠] <ul style="list-style-type: none"> ■ Excellent grain size Kabuli type 	Nipper[♠] and Boomer[♠] <ul style="list-style-type: none"> ■ New improved Red and Green Lentils 	

Northern NSW Jon Thelander 0429 314 909 Central and Southern NSW Robert Gill 0428 122 465

♠ Protected by PBR. The products denoted with this symbol are subject to the Plant Breeders Rights in Australia. Unauthorised commercial propagation or any sale, conditioning, export, import or stocking of propagating material is an infringement under the Plant Breeders Right Act (1994). The material contained in this advertisement is from official sources and is considered reliable. It is provided in good faith and every care has been taken to ensure its accuracy. AWB Seeds does not accept any responsibility for the consequences, which may arise from the acceptance of recommendations or suggestions made.


AWB Seeds
 1800 054 433
www.awbseeds.com.au